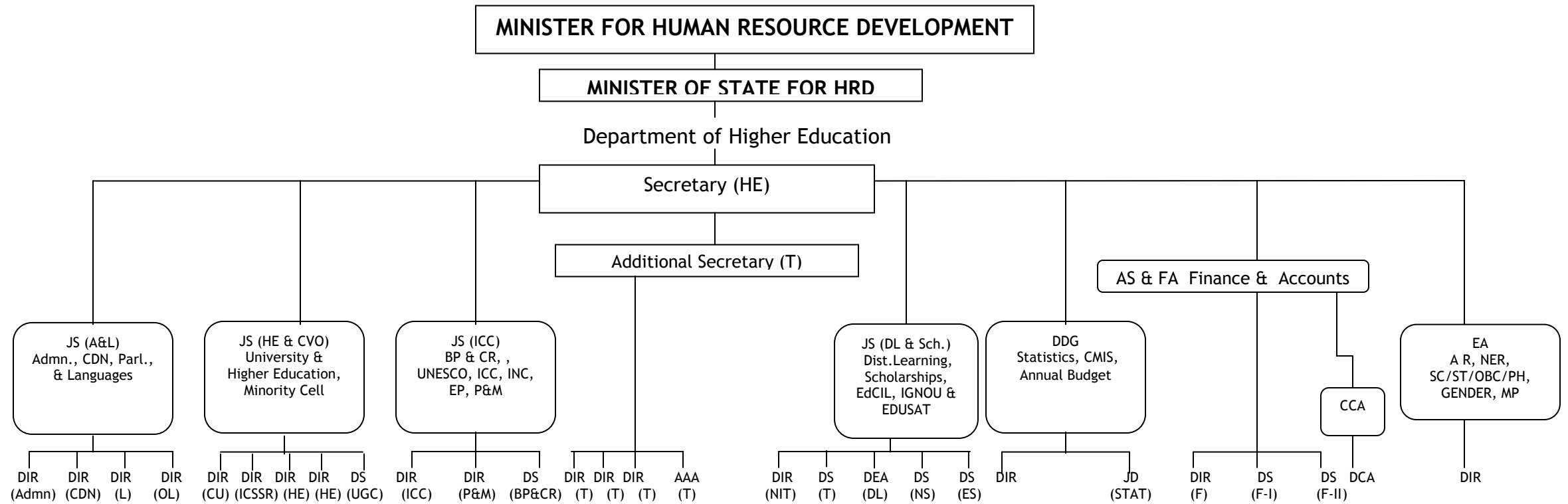


# ORGANISATION CHART



JS – JOINT SECRETARY  
ADMN-ADMINISTRATION  
CDN-COORDINATION  
PARL-PARLIAMENT

DIR – DIRECTOR  
DS-DEPUTY SECRETARY  
HE-HIGHER EDUCATION  
MC- MINORITY CELL  
CVO- CHIEF VIGILANCE OFFICER  
CU- CENTRAL UNIVERSITY  
UGC- UNIVERSITY GRANTS COMMISSION  
ICSSR- INDIA COUNCIL OF SOCIAL SCIENCE RESEARCH

DEA – DEPUTY EDUCATIONAL ADVISER  
JD – JOINT DIRECTOR  
P - PLANNING  
UNESCO-UNITED NATIONS EDUCATIONAL SCIENCE & CULTURAL ORGANISATION  
T - TECHNICAL  
OL - OFFICIAL LANGUAGE  
ICC- INTERNATIONAL CO-OPERATION CELL  
BP & CR- BOOK PROMOTION & COPYRIGHT  
EP- EDUCATION POLICY  
P&M – PLANNING & MONITORING

FA – FINANCIAL ADVISER  
ES- EXTERNAL SCHOLARSHIP  
NS- NATIONAL SCHOLARSHIP  
DL- DISTANCE LEARNING  
AAA- ADDITIONAL APPRENTICESHIP ADVISER  
NIT- NATIONAL INSTITUTE OF TECHNOLOGY  
EDCDL- EDUCATIONAL CONSULTANTS (INDIA) LTD.  
IGNOU- INDIRA GANDHI NATIONAL OPEN UNIV.  
EDUSAT- EDUCATIONAL SATELLITE

CCA – CHIEF CONTROLLER OF ACCOUNTS  
DCA – DEPUTY CONTROLLER OF ACCOUNTS  
F - FINANCE  
F-I FINANCE –I  
F-II FINANCE –II

EA – ECONOMIC ADVISER  
AR – ANNUAL REPORT  
NER – NORTH EASTERN REGION  
PH- PHYSICALLY HANDICAPPED  
MP- MANPOWER PLANNING  
SC- SCHEDULED CASTE  
ST- SCHEDULED TRIBES  
OBC- OTHER BACKWARD CLASS